



APPAREL FIT AND STYLE GUIDE



Table of Contents

- 3. Fit/Style Attributes
- 4. Gown/Dress Shapes
- 5. Leg Shapes
- 6. Sleeve Length and Neck Depth
- 7. Top, Gown, and Robe Lengths
- 8. Pant Lengths and Waist Placements
- 9. Pant Length Conversion Inseam to “On Body” Outseam
- 10. On Body Placements- other
- 11. Pocket Shapes and Placement
- 12. How to Measure on Soma Mannequin
- 13. Soma Alva Form Measurements

SOMA FIT CLASSIFICATION



Layering

No garment ease.
Hugs the body and layers
well under your
favorite pieces.



Fitted

Little garment ease.
Skims the body to show
your curves.



Semi- Fitted

Garment ease in all
the right places.
Slight shaping.



Relaxed

Easy fit.
Perfect for lounging.

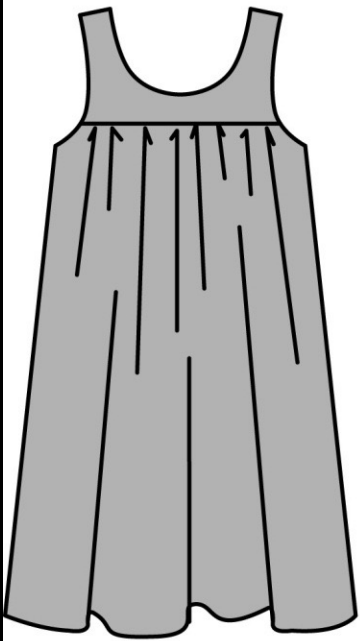


Effortless

Ample room for
movement and
comfort.

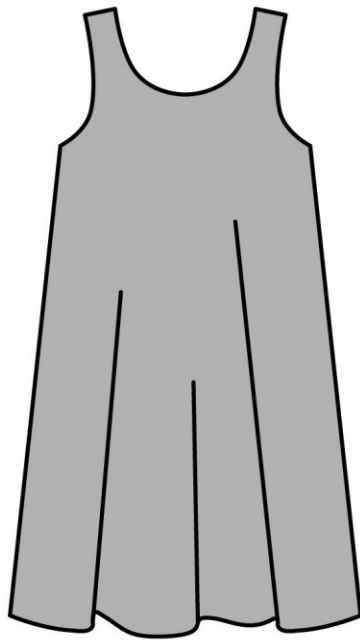
SOMA GOWN/DRESS SHAPES

*ALL MEASUREMENTS ARE APPROXIMATE
AND REPRESENT SIZE MEDIUM*



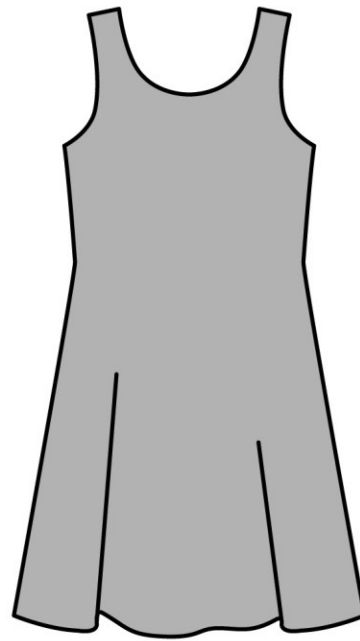
FULL

STRAIGHT FROM BUST TO HEM
WITH LOTS OF FULLNESS IN HEM.
HAS CROSS SEAMS WITH
SHIRRING OR PLEATS



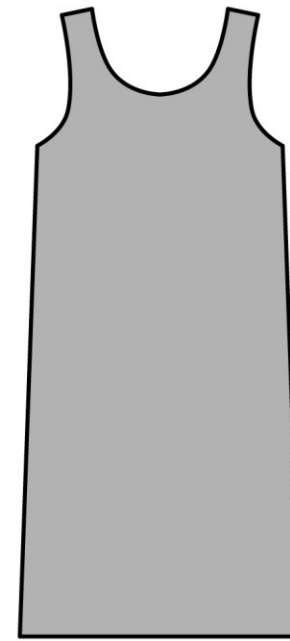
TRAPEZE

STRAIGHT FROM BUST TO HEM
WITH FULLNESS IN HEM.
NO WAIST SHAPE.



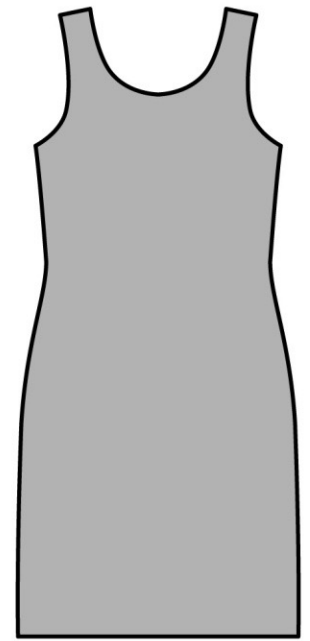
A-LINE

FOLLOWS BODY SHAPE AT BUST
AND WAIST.
HAS FULLNESS IN HEM



SHIFT

STRAIGHT FROM BUST TO HEM.
NARROW HEM
NO WAIST SHAPE.

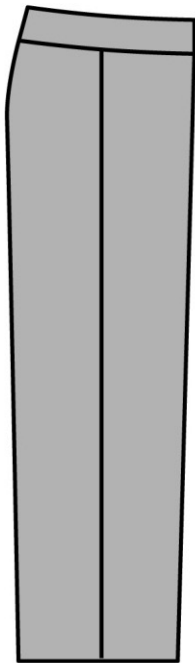


SHEATH

FOLLOWS BODY SHAPE
HAS SIDE SEAM SHAPING
OR DARTS.
NARROW HEM

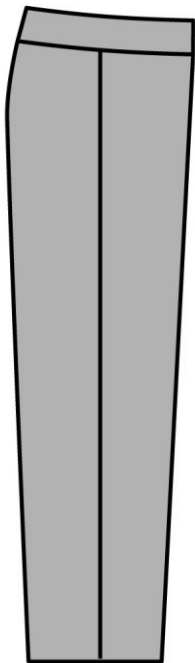
SOMA LEG SHAPES

*ALL MEASUREMENTS ARE APPROXIMATE
AND REPRESENT SIZE MEDIUM*



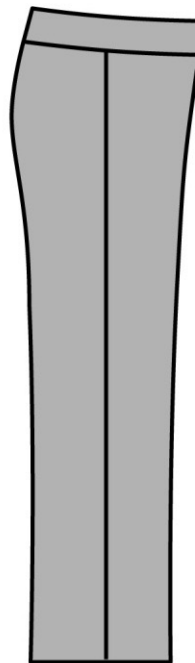
Wide

Widest leg opening,
up to 12 1/2"
Full from thigh down
No knee shape



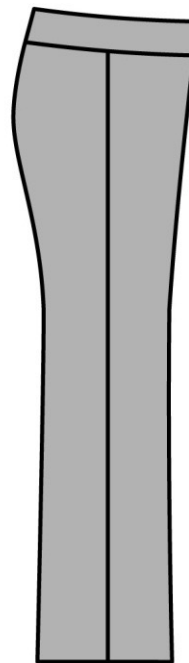
Straight

Leg opening 10" to 11"
Straight from thigh down
No knee shape



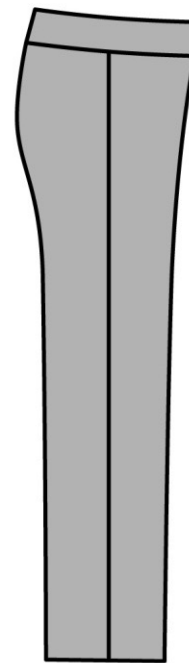
Tailored

Leg opening 10" to 11"
Closer fitting at thigh
Comes in slightly
above knee



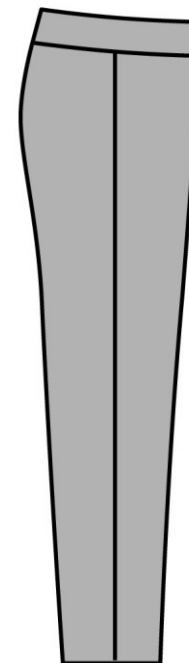
Boot Cut

Leg opening 9" to 10"
Close fitting at thigh
Comes in above knee
Straight to leg opening



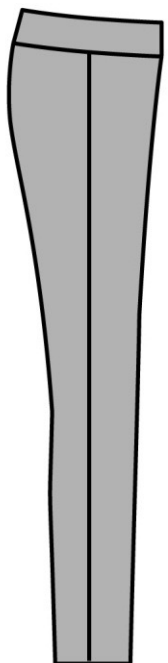
Stovepipe

Leg opening 8" to 8 1/2"
Close fitting at thigh
Straight from thigh down
No knee shape



Tapered

Smaller leg opening
Straight from thigh down
No knee shape



Legging

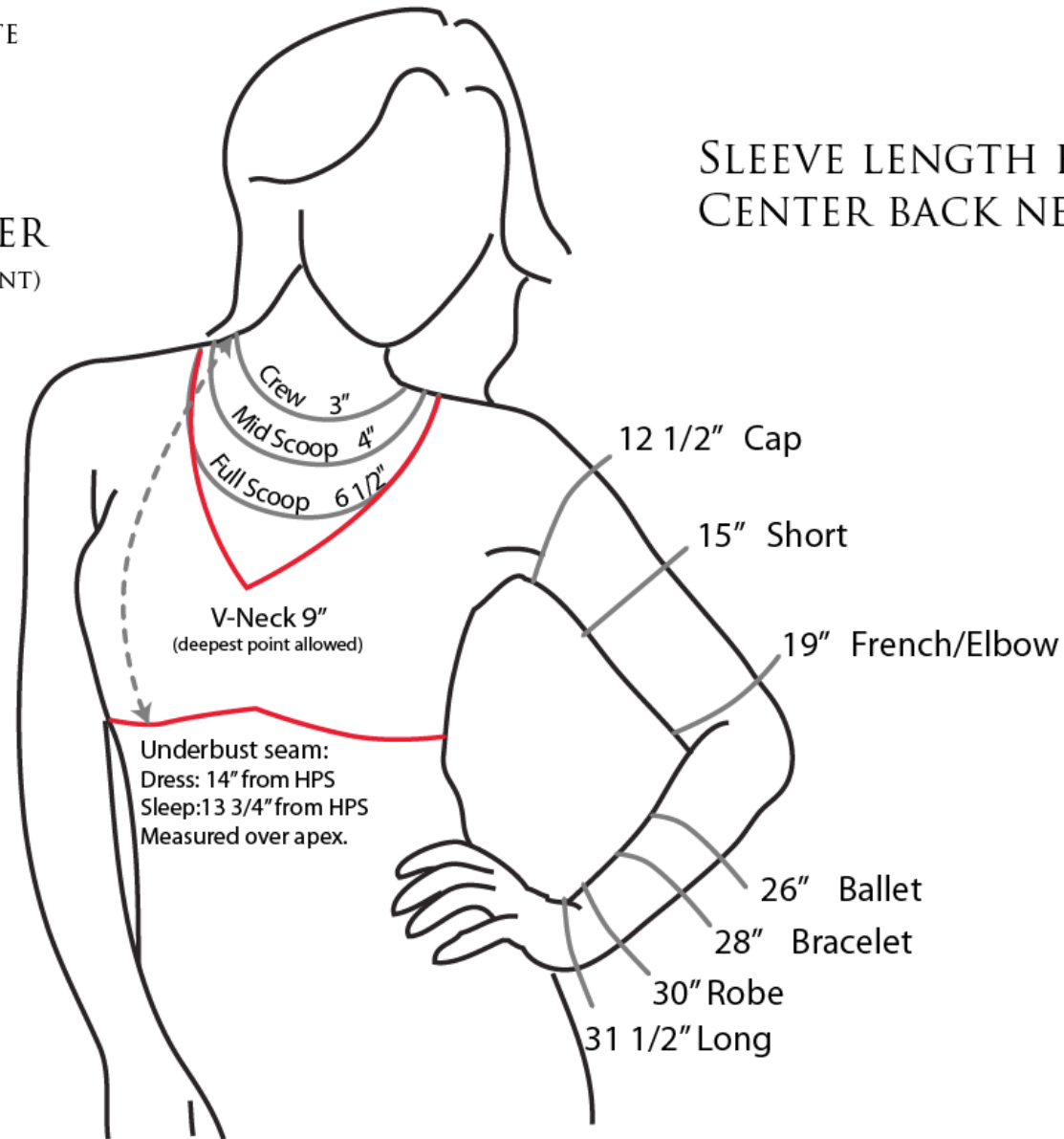
Close fitting
Hugs leg at all points

NECK & SLEEVE LENGTHS

*ALL MEASUREMENTS ARE APPROXIMATE
AND REPRESENT SIZE MEDIUM*

NECK DEPTHS FROM HIGH POINT OF SHOULDER

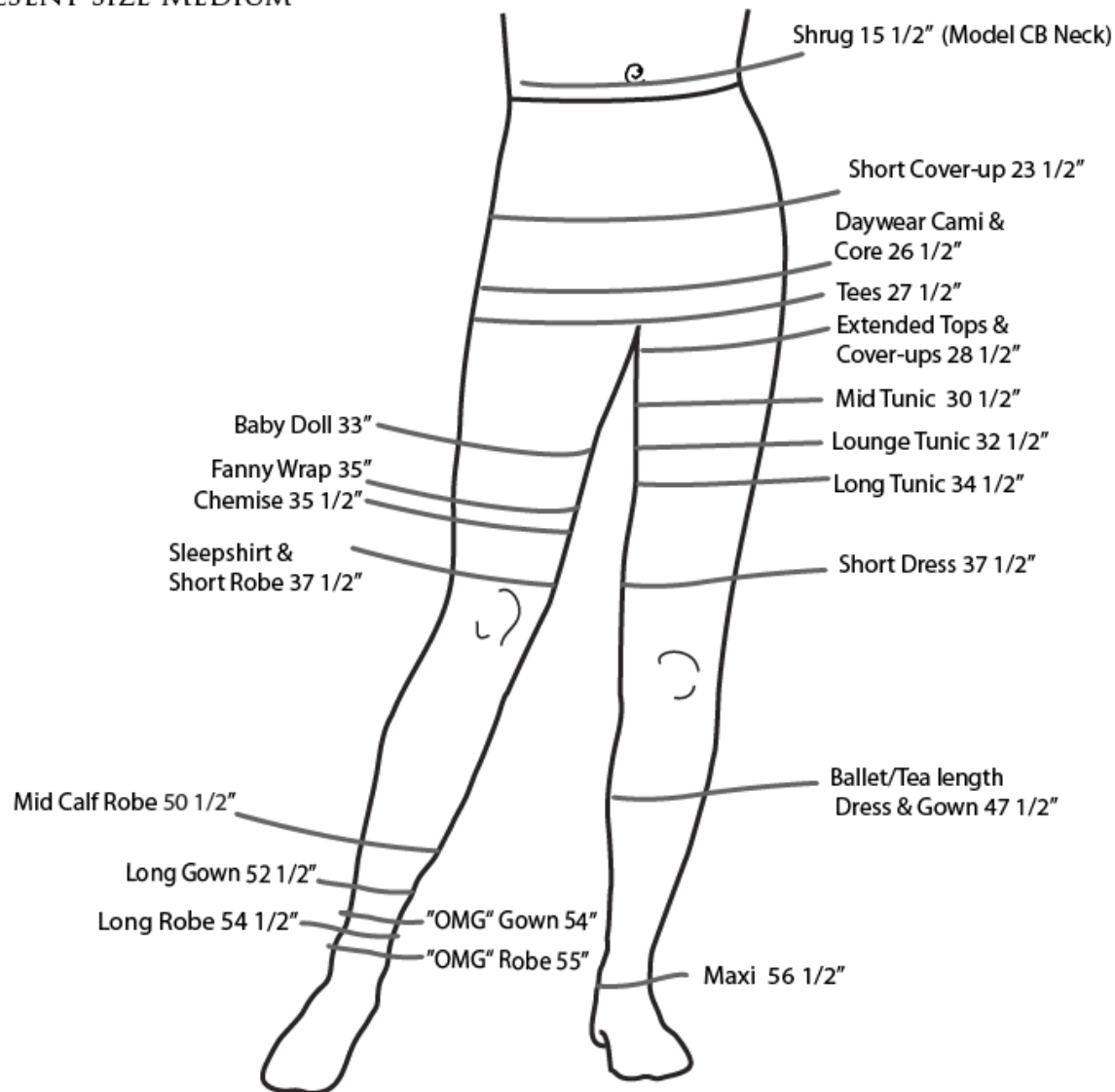
(SUBTRACT 2 1/2" FOR ON-BODY MEASUREMENT)



TOP & GOWN LENGTHS

MEASURED FROM HIGH POINT OF SHOULDER ON BODY

*ALL MEASUREMENTS ARE APPROXIMATE
AND REPRESENT SIZE MEDIUM*



FASHION JACKET LENGTHS
May vary per Product
Development

VENT LENGTHS

Tops 2 - 3"
Tunics 3-5"
Knee length & above 5-7"
Below Knee 7-14"

PAIRINGS

Top to Jacket variation: 1"
Gown to Robe variation: 2"

ROBE FRONT OVERLAP

5 size: 8" overlap
2 size: 10" overlap

*ALL MEASUREMENTS ARE APPROXIMATE
AND REPRESENT SIZE MEDIUM*

WAIST PLACEMENT

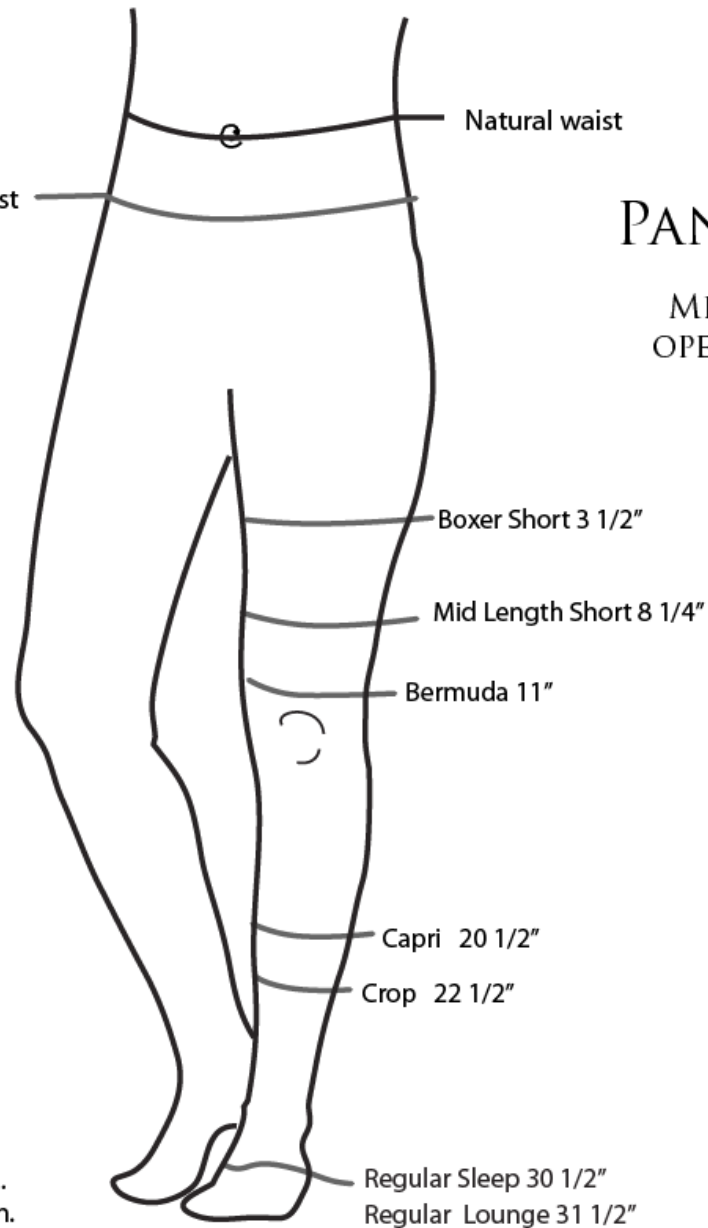
MEASURED FROM NATURAL
WAIST TO TOP OF PANT

2 1/2" blw natural waist

Natural waist

PANT INSEAM LENGTHS

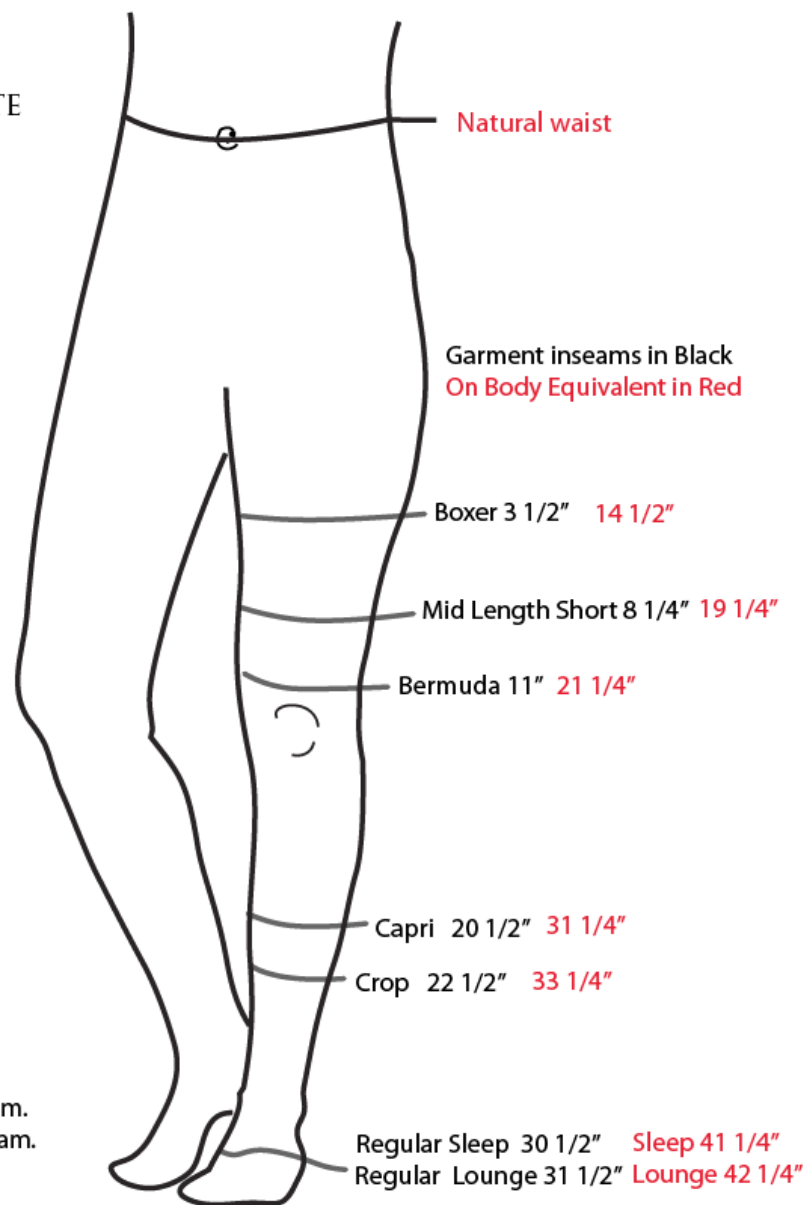
MEASURED FROM CROTCH TO LEG
OPENING ON GARMENT AND MAY BE
ADJUSTED BY FABRICATION



"Short" Length is 2" less inseam.
"Tall" Length is 3" longer inseam.

PANT LENGTH CONVERSION INSEAM TO “ON BODY” OUTSEAM

*ALL MEASUREMENTS ARE APPROXIMATE
AND REPRESENT SIZE MEDIUM*



PANT LENGTHS
Outseam measured
from natural waist
to hem edge ON BODY

"Short" Length is 2" less inseam.
"Tall" Length is 3" longer inseam.

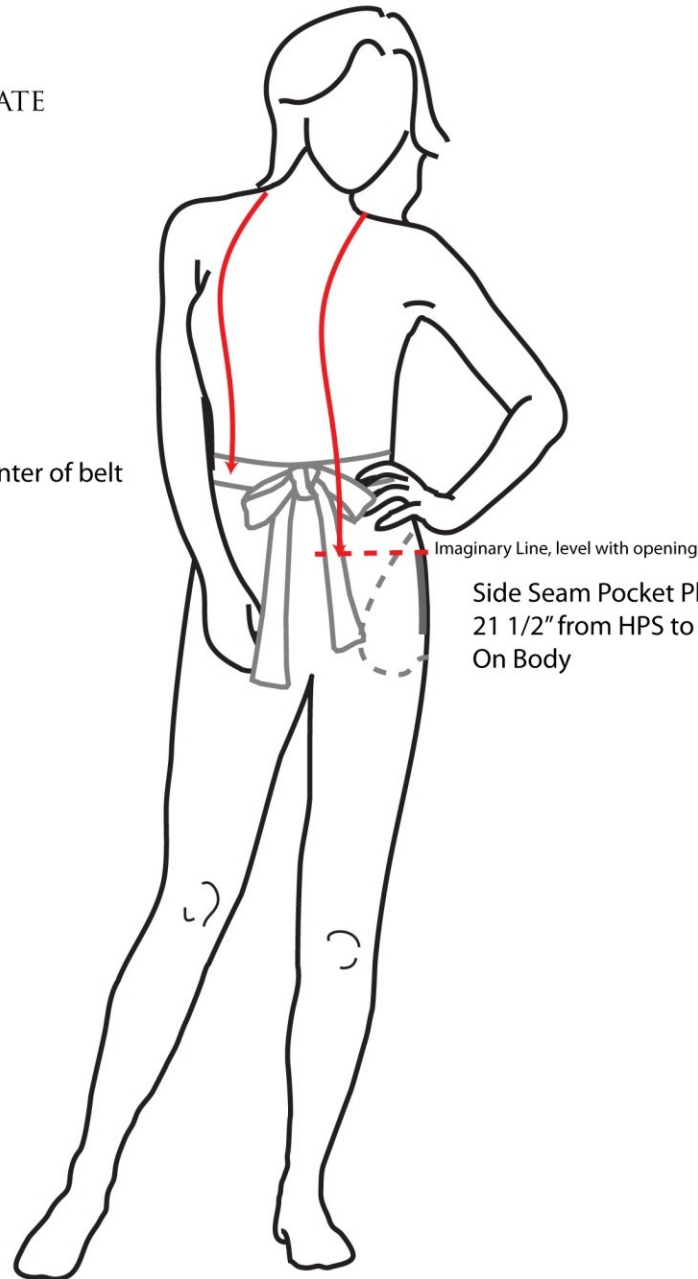
ON-BODY PLACEMENTS

*ALL MEASUREMENTS ARE APPROXIMATE
AND REPRESENT SIZE MEDIUM*

Measure from HPS, over apex,
and straight down to point to measure
(example: Underbust, Pocket, Belt, etc...)

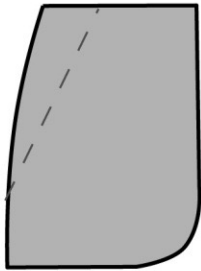
Belt Placement:
17 1/2" from HPS to center of belt
On Body

Side Seam Pocket Placement:
21 1/2" from HPS to Top of opening
On Body



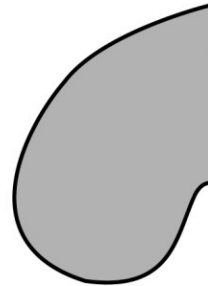
SOMA POCKET SHAPES AND PLACEMENT

*ALL MEASUREMENTS ARE APPROXIMATE
AND REPRESENT SIZE MEDIUM*



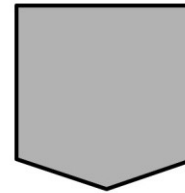
Slash pocket bag shape

Height 8 1/2", width 6 1/2"



Side seam pocket bag shape

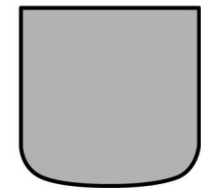
Height 10 3/4" total, width 6 3/8"



Spade

Top size 3 1/2" h x 3 1/4" w

Bottom size 5" h x 5" w

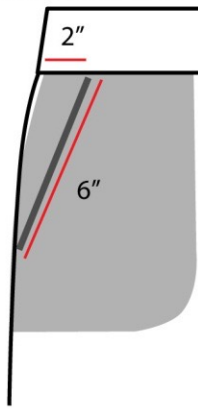


Rounded

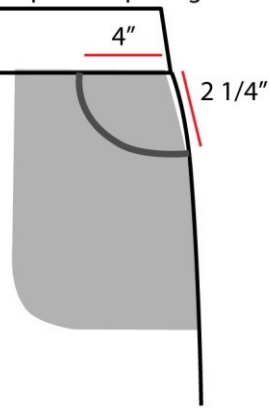
Top size 3 1/2" h x 3 1/4" w

Bottom size 5" h x 5" w

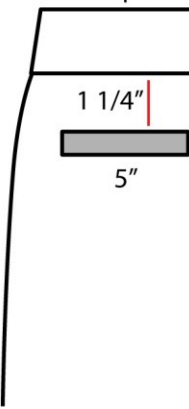
Slash pocket opening



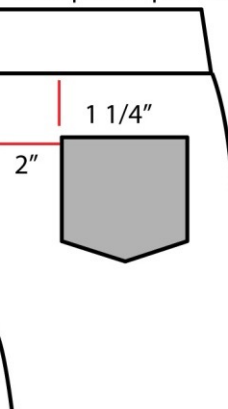
J-pocket opening



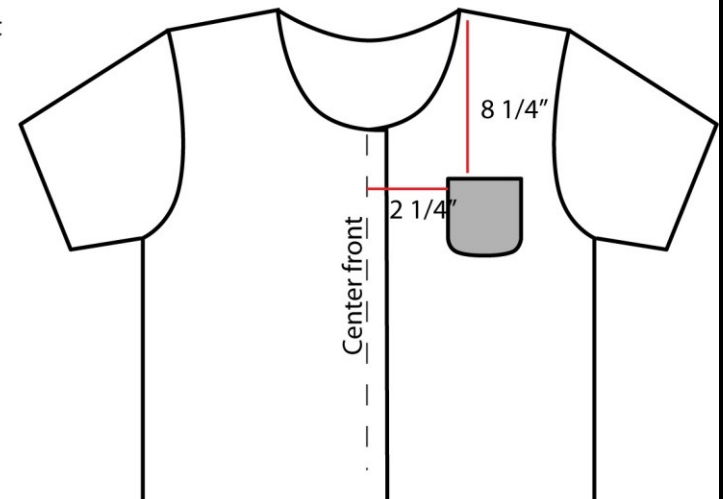
Back welt placement



Back pocket placement



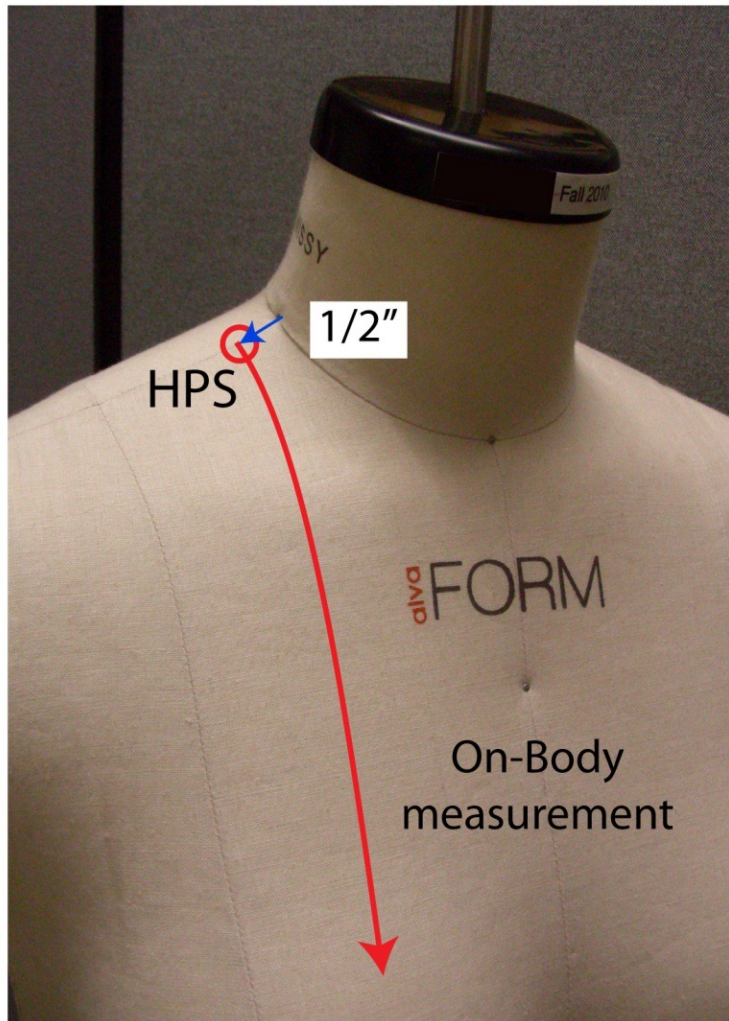
Top pocket placement



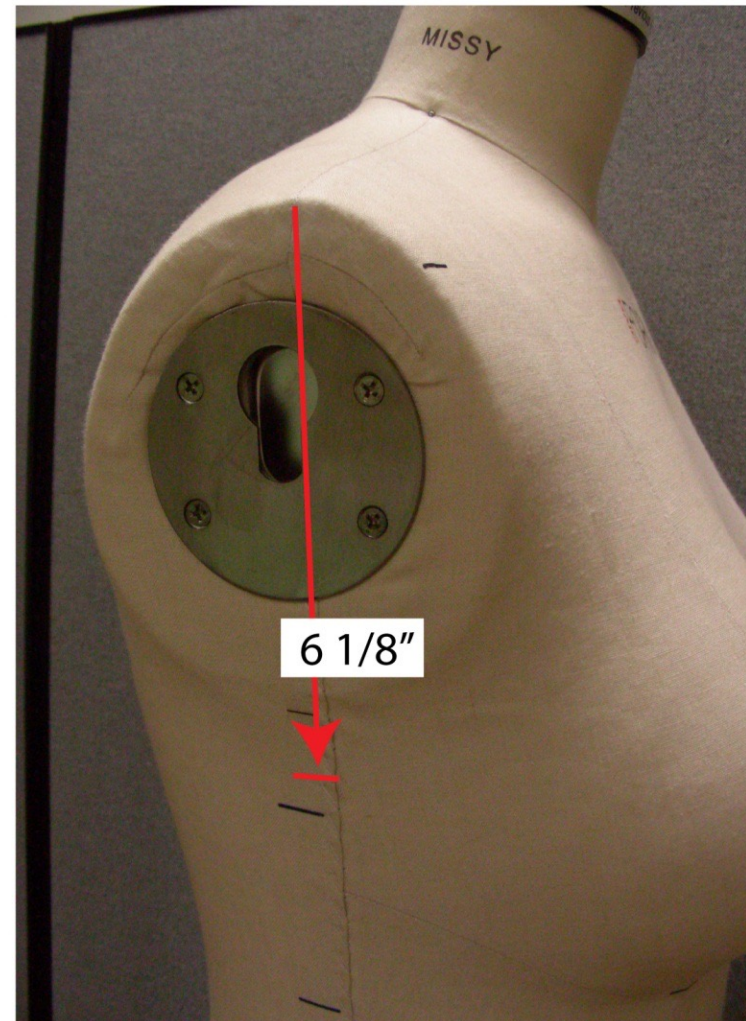
SOMA MANNEQUIN MEASUREMENTS

*ALL MEASUREMENTS
REPRESENT SIZE MEDIUM*

"On Body" Measurements
using Soma Mannequin
HPS placed 1/2" from neck
seam, along shoulder seam.



"Ideal" armhole depth
Measure 6 1/8" from shoulder.
This is the top edge of
sleeveless armholes.



SOMA ALVANON FORM MEASUREMENTS

ALL MEASUREMENTS ARE ACTUAL AND REPRESENT SIZE MEDIUM/10

Dimension	Chinese Translation	Height	Client Specs	Actual Meas.
Total Form No Head	無頭身高	59.04		58.875
CFNeck to Waist	前領至腰		14.88	14.940
CBNeck to Waist	後領至腰		16.00	16.125
CFMid Neck	中頸前高	55.85	12.50	12.375
CBMid Neck	中頸後高	57.09		
Neck Base	領圍		13.50	13.625
Across Shoulder	全肩		15.50	15.500
CFNeck to Around Shoulder	前領至肩圍		3.63	3.500
Around Shoulder	肩圍	51.44	41.50	41.313
Shoulder Drop	膊斜		2.00	2.000
CBNeck to Wrist	袖長(後中至手腕)		30.75	30.940
ArmLength	袖長(膊至手腕)		23.00	23.125
Armhole	夾圍		15.88	16.063
Bicep	手臂		12.00	12.063
Elbow	手肘		9.25	9.375
Wrist	手腕		6.00	6.000
Arm Extension	手腕外長		1.50	1.500
CFneck to Across Front	前中至前橫		3.00	3.000
Across Front	前橫		13.50	13.625
CBneck to Across Back	後中至後橫		4.75	4.750
Across Back	後橫		14.13	14.250
Apex to Apex	胸至胸		8.25	8.313
Halter	胸至胸(經后頸)		27.88	27.750
HPS to Apex	肩點至胸點		10.75	10.750
CFNeck to Above Bust	前領至上胸		4.63	4.625
CBNeck to Above Bust	后領至上胸		8.00	8.063
CFAbove Bust	上胸前高	50.66	36.00	36.125
CBAbove Bust	上胸后高	48.51		
Bust	胸	47.25	37.50	37.625
Under Bust	下胸	44.71	32.00	32.250
Waist	腰	40.50	31.50	31.375
Waist to High Hip	腰至上坐		4.00	4.000
High Hip	上坐	36.51	37.50	37.375
Waist to Low Hip	腰至下坐		8.00	8.000
Low Hip	下坐	32.56	40.50	40.500
Vertical Trunk	全浪(經肩點)		62.25	62.438
Total Rise	全浪		27.50	27.688
Thigh	脾	29.24	22.50	22.688
Knee	膝	19.02	14.25	14.375
Calf	小腿	12.61	14.00	14.000
Ankle	腳踝	3.00	9.25	9.375

