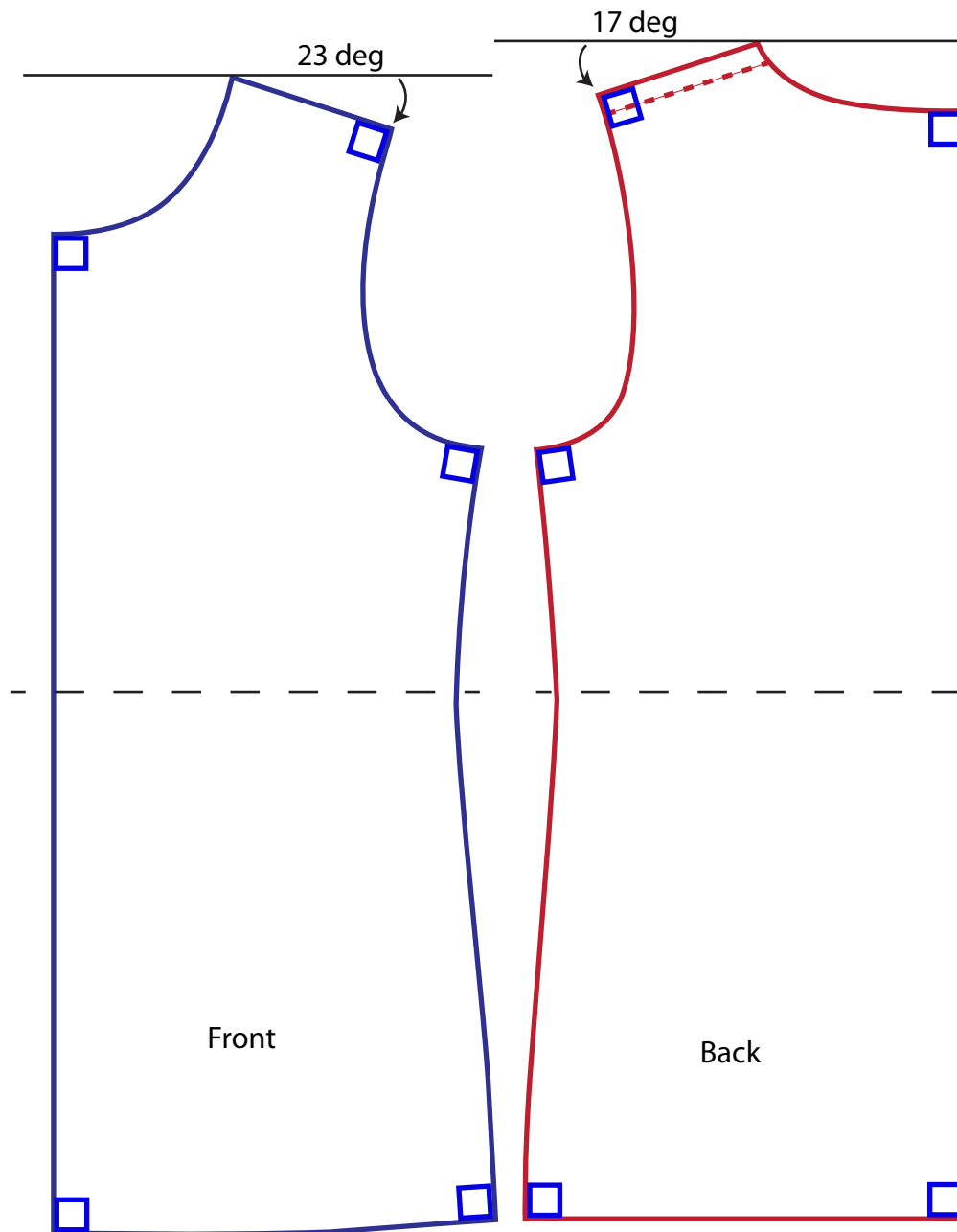


The background of the slide features a close-up of a fabric with a complex, multi-colored geometric pattern. Overlaid on this is a white, semi-transparent pattern piece, likely for a garment, which has a red pencil resting on it. The pencil is positioned diagonally, pointing towards the bottom left. The overall aesthetic is technical and creative, related to fashion design.


Soma

Balanced Pattern and Manipulation Guide Tops

**** All measurements are for a size MED garment.**



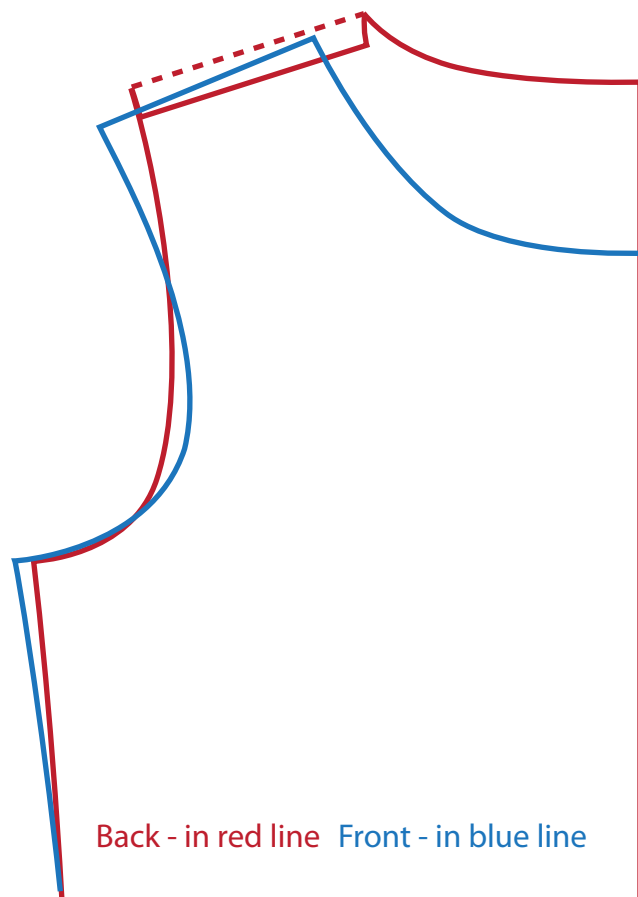
Shoulder slope should AVERAGE 20 degrees between front and back.
Front may be more angled to achieve length over bust.

All intersections with  should be set at 90 degree angle for smooth line after sewing.

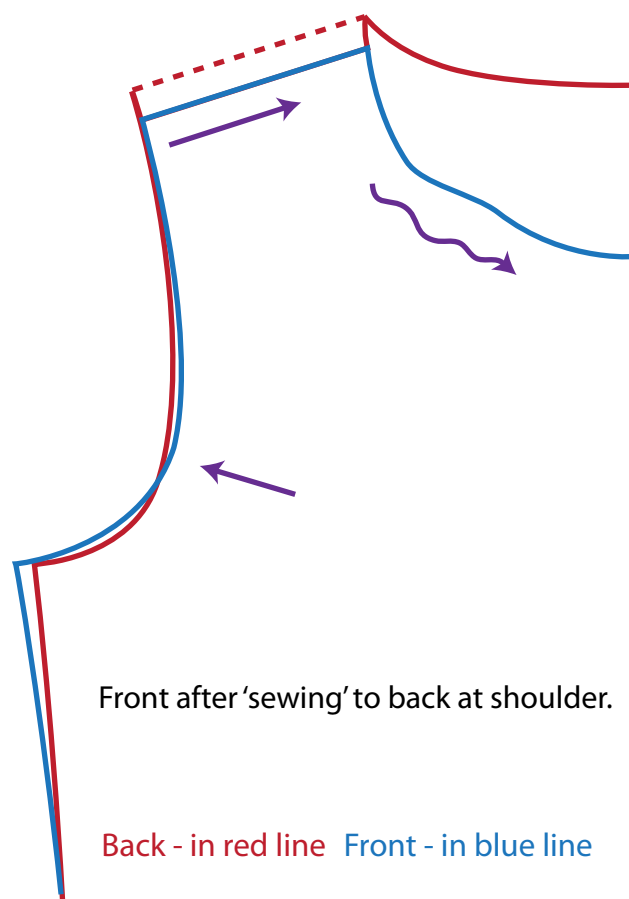
Narrowest width at side seam should be at waist placement.

To pull front armhole closer to body and prevent gapping and fold lines, shift front shoulder to be set wider than back. This will pull front armhole in when shoulders are sewn together.

Front shoulder shifted to be set wider than back.

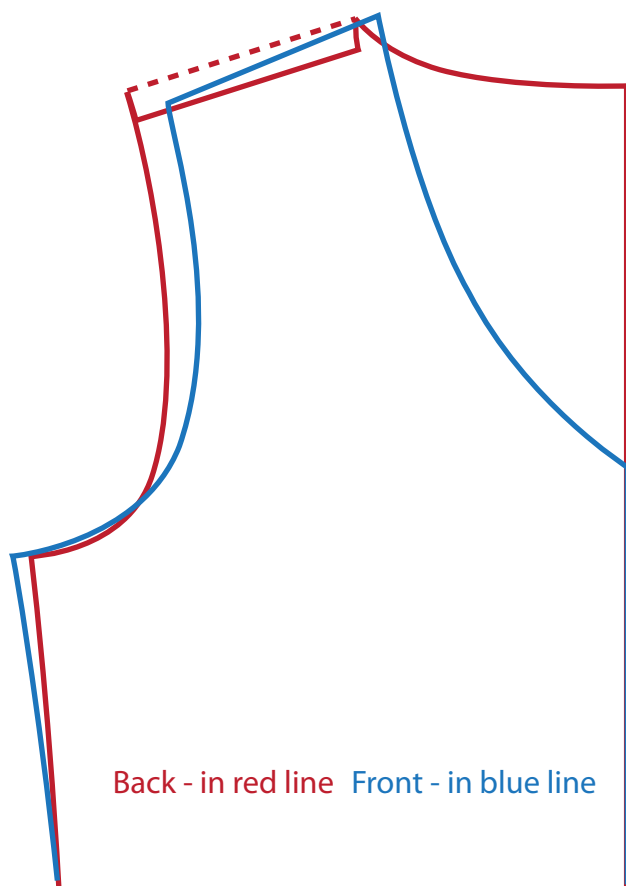


NOTE: This will cause neckline to hang looser on body. This works well on high necklines, surplice styles, or patterns with CF seam where excess can be removed.



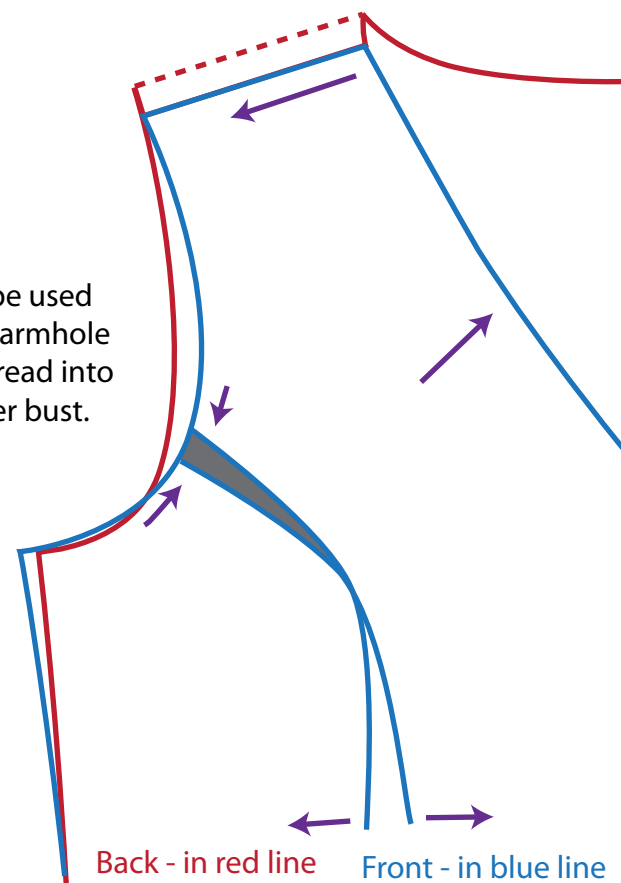
To pull front neck closer to body and prevent gapping, shift front shoulder to be set narrower than back.
This will pull front neckline in when shoulders are sewn together.

Front shoulder shifted
to be set closer to CF than back.



NOTE: This will cause armhole to be looser on body.
This works better on styles with princess seams, darts, or shirring
so fullness can be removed or redistributed.

Princess seam may be used
to remove excess in armhole
or excess may be spread into
shirring or dart under bust.



Front shoulder more angled than back.

Back - in red line

Front - in blue line

Front bust may be wider than back to accommodate for fuller front bust, no more than $\frac{3}{8}$ " each side.


0" at waist

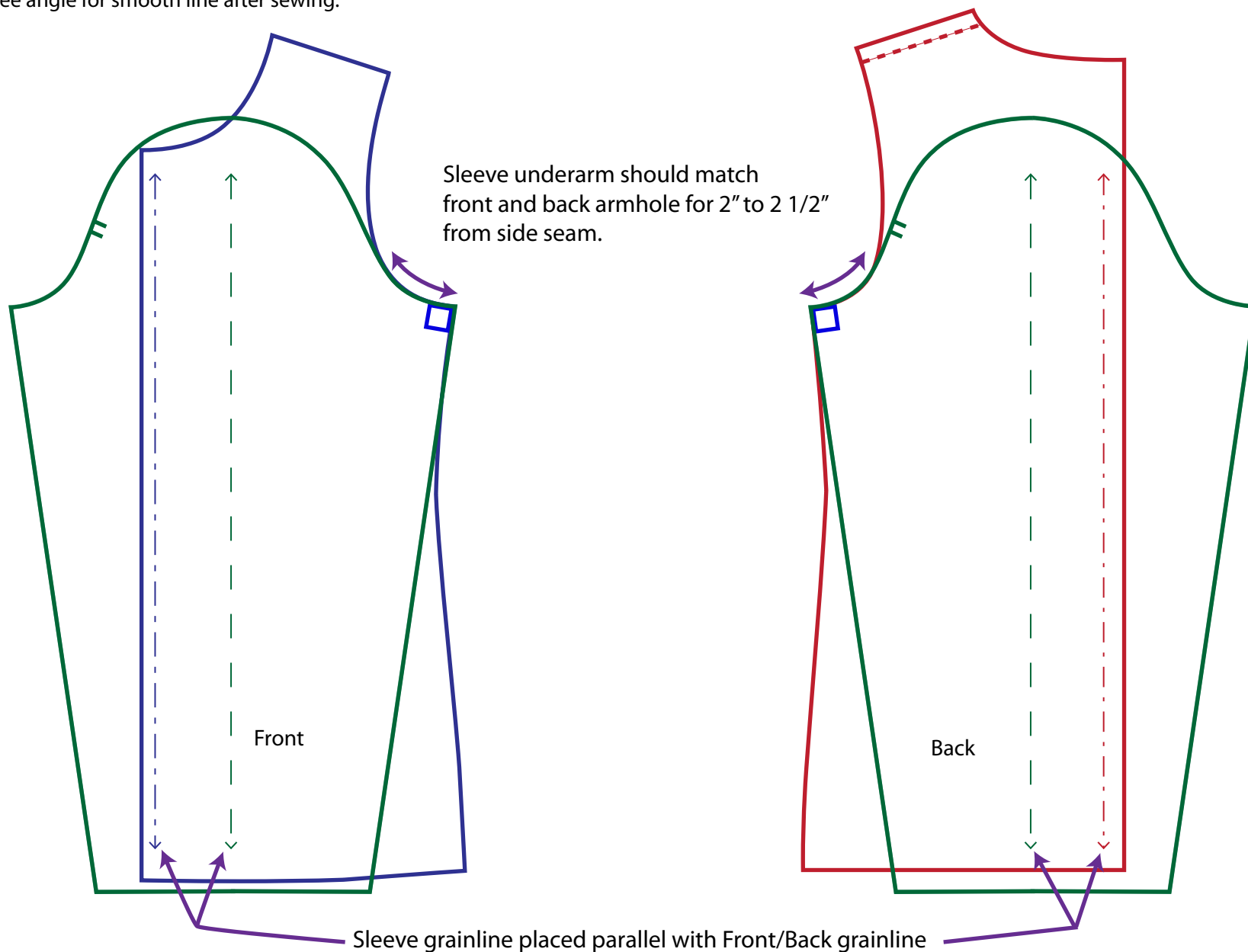
Back - in red line

Front - in blue line

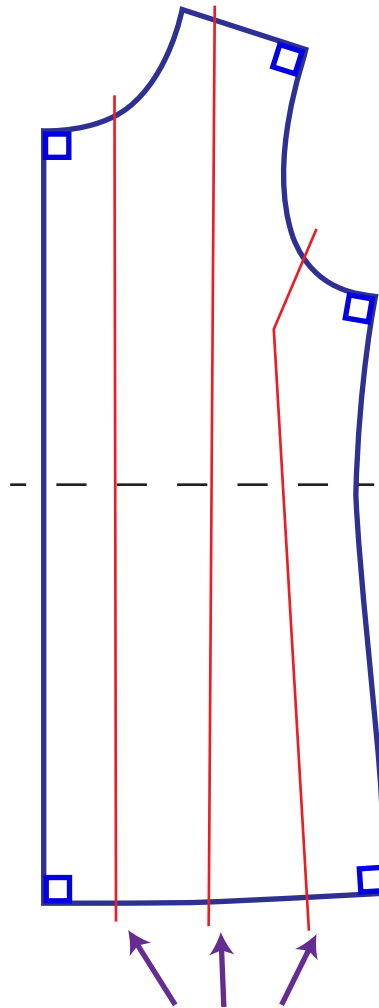
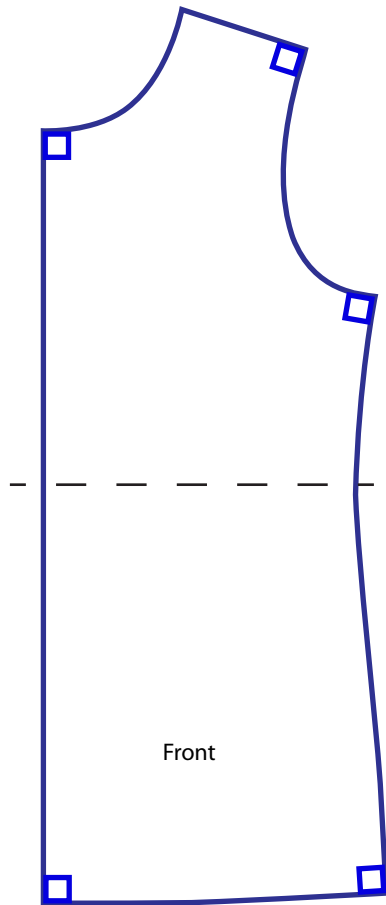
Back panel may be slightly wider than front to accommodate for back hip, no more than $\frac{3}{8}$ " each side.

Front hem may be slightly longer to accommodate for length over bust, up to $\frac{3}{8}$ ".

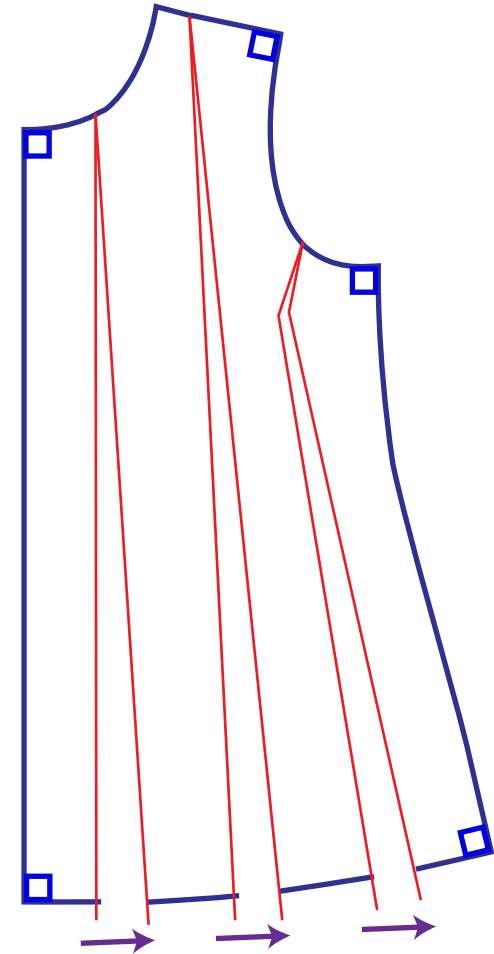
All intersections with  should be set at 90 degree angle for smooth line after sewing.




Neckline, shoulder, and armhole shapes will be slightly different after spreading.

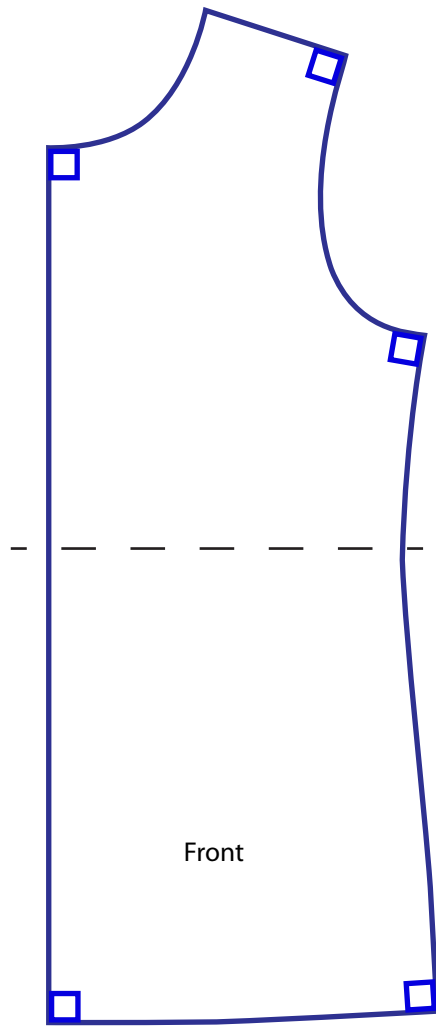



Add cut lines to distribute fullness evenly at sweep.

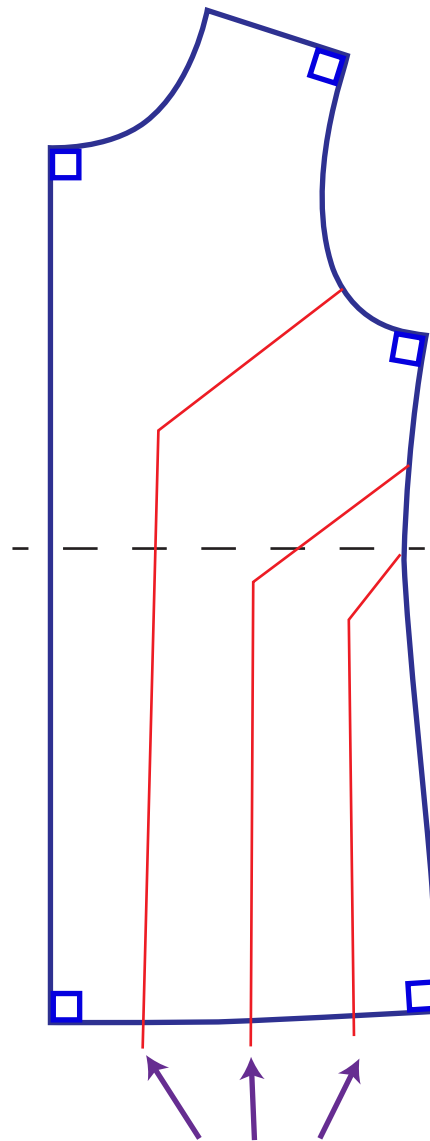


Spread to meet sweep spec.

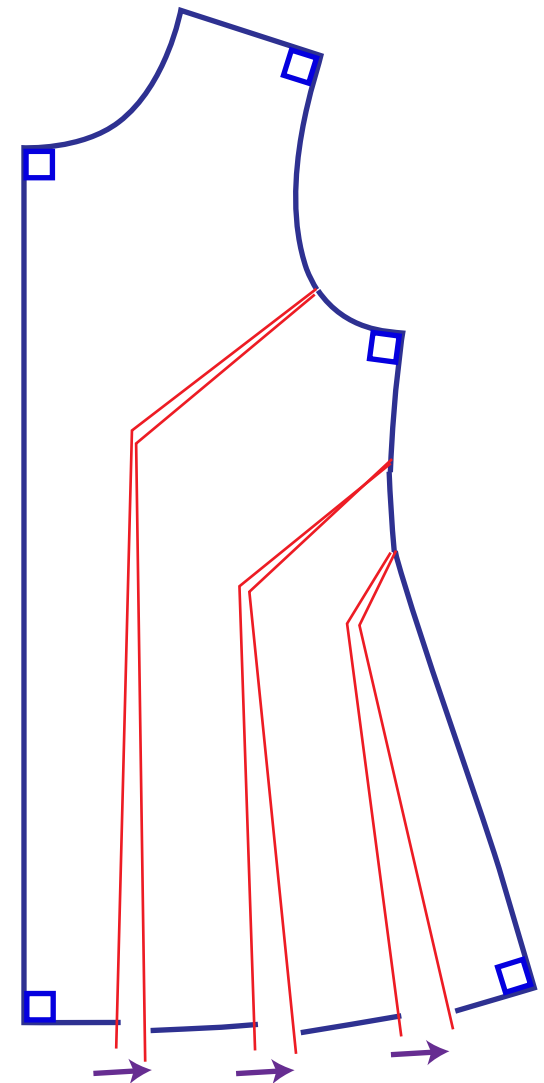
All intersections with  should be set at 90 degree angle for smooth line after sewing.



All intersections with  should be set at 90 degree angle for smooth line after sewing.

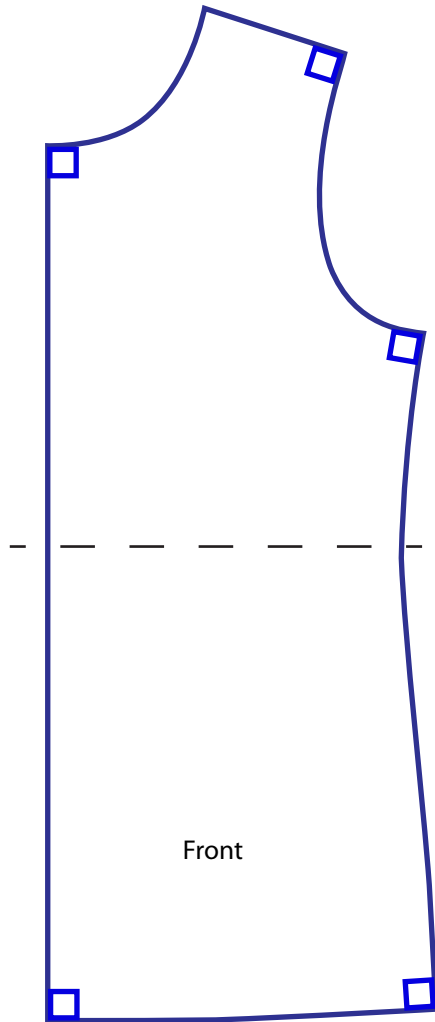


Add cut lines to distribute fullness evenly at sweep.




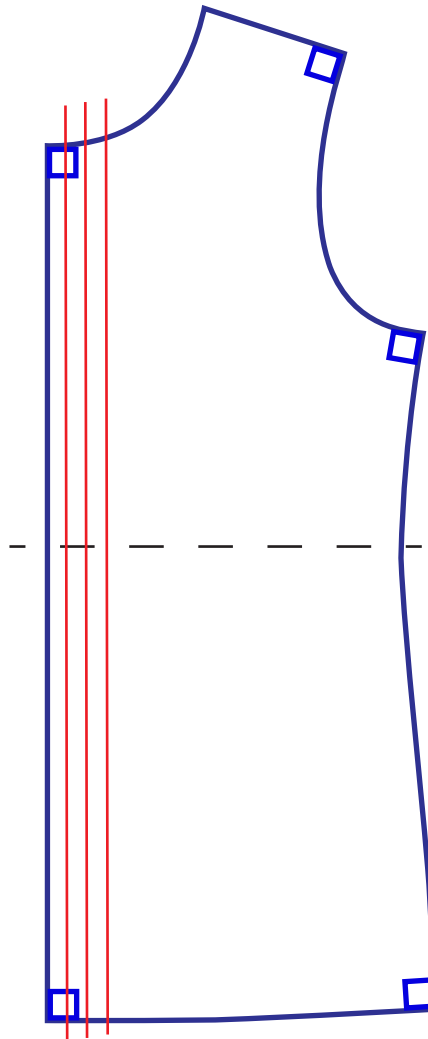
Spread to meet sweep spec.

Spread to meet shirring ratio
or pleat requirements.

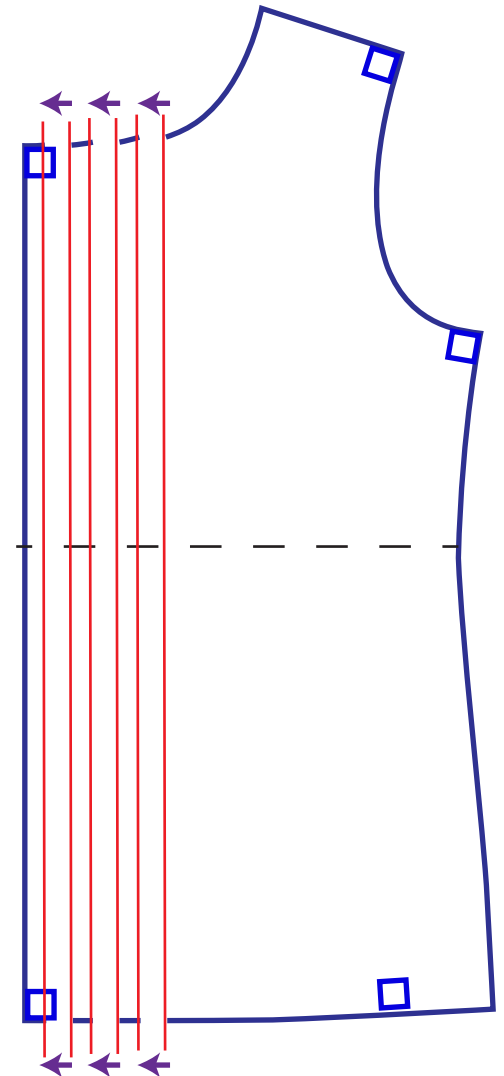


Front


All intersections with  should be set at
90 degree angle for smooth line after sewing.

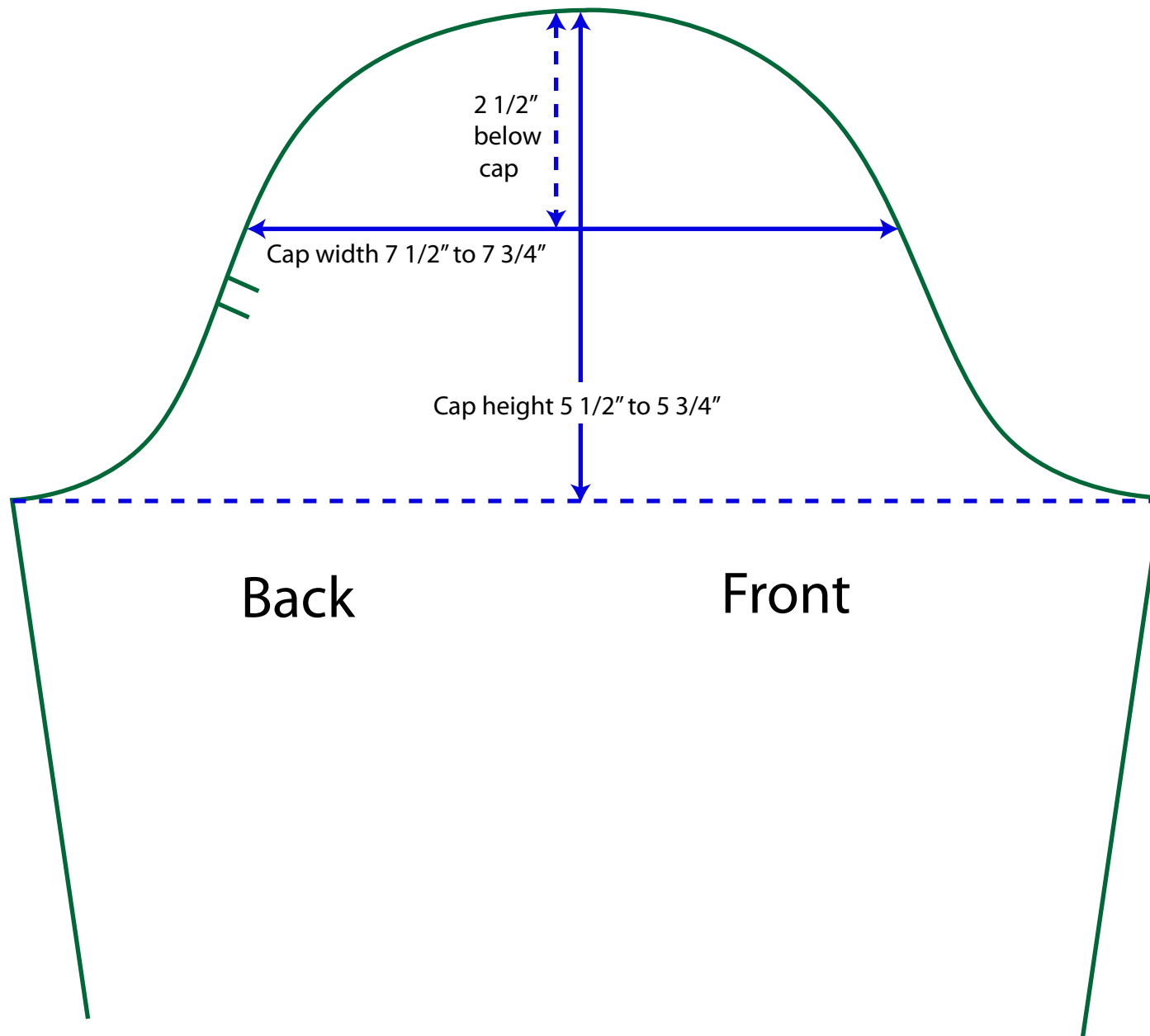



Add cut lines to meet shirring or pleat placement.

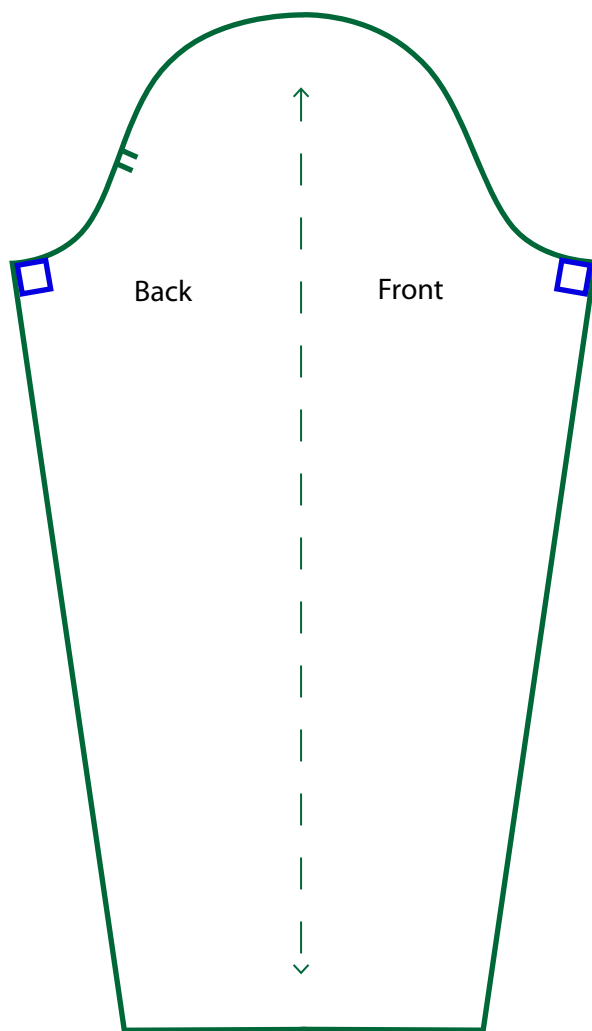


Spread to meet sweep spec.
Hem remains level.

All intersections with  should be set at 90 degree angle for smooth line after sewing.



All intersections with  should be set at 90 degree angle for smooth line after sewing.



Back sleeve cap width is about 1/4" to 3/8" wider than front when folded in half.

